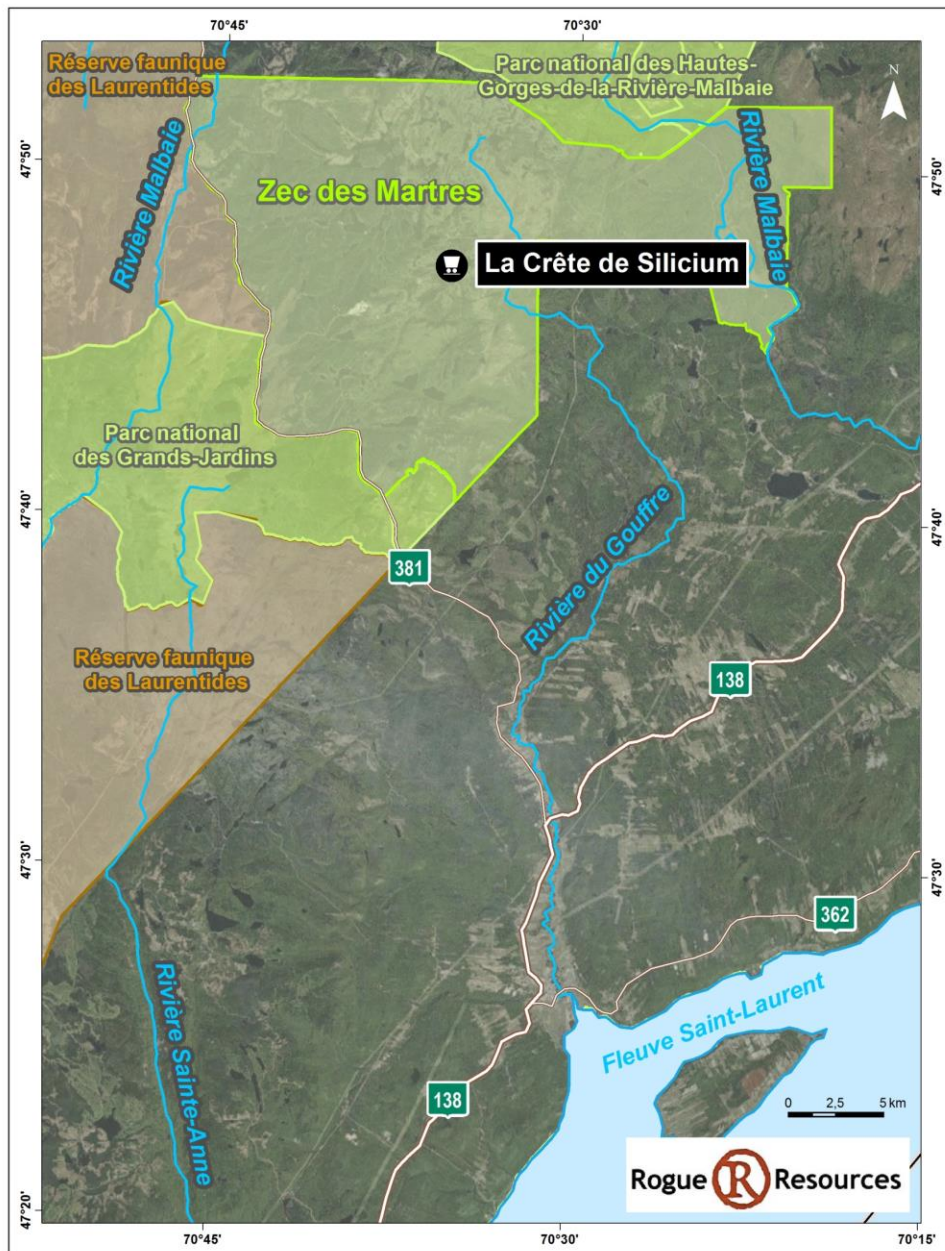


Silicon Ridge Project

Project Location, Proposed Infrastructure and Road Access

The Silicon Ridge Project is located in the Province of Québec, approximately 95 km northeast of Québec City, approximately 53 km north of the Town of Baie-Saint-Paul, on the north shore of the Saint Lawrence River (Figure 1).

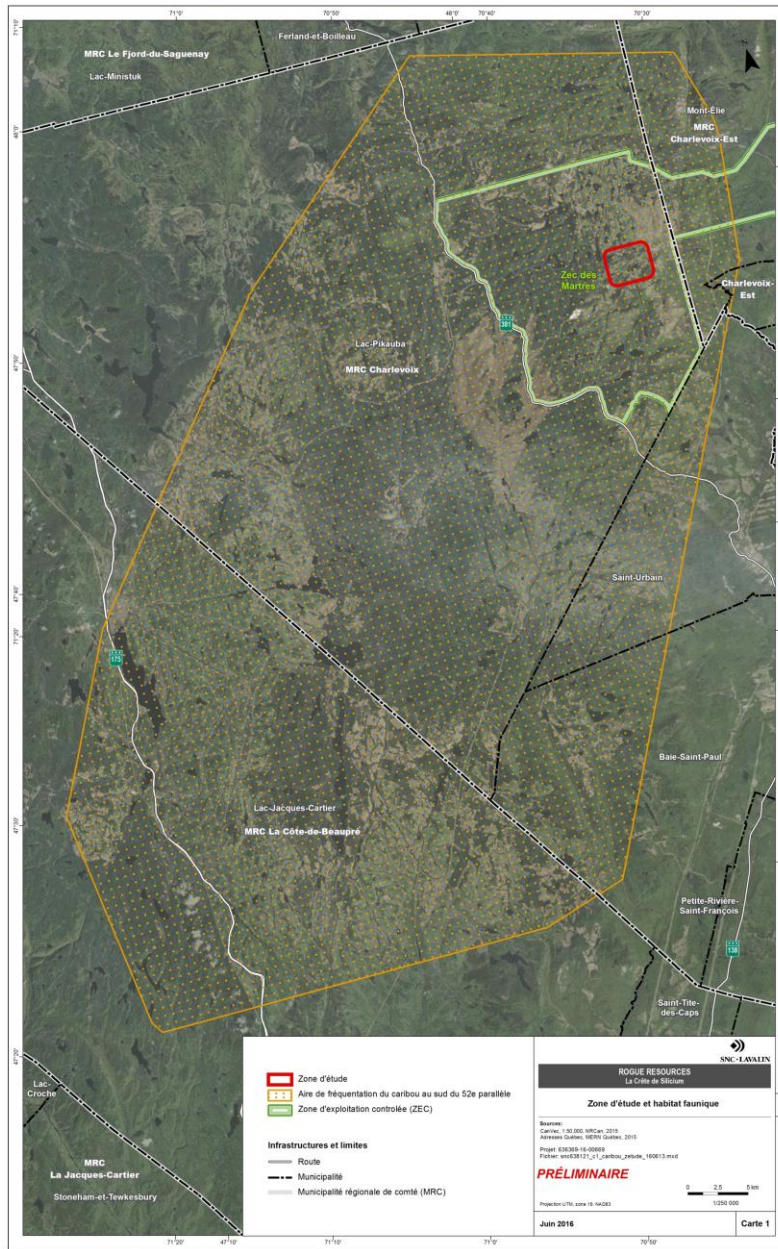
Figure 1: Silicon Ridge Project Location



The Property is located within the area covered by National Topographic System (NTS) map sheet 21M/15. The centre of the Property is approximately at Universal Transverse Mercator (“UTM”) coordinates 381350 mE, 5294350 mN, North American Datum NAD83, Grid Zone 19N.

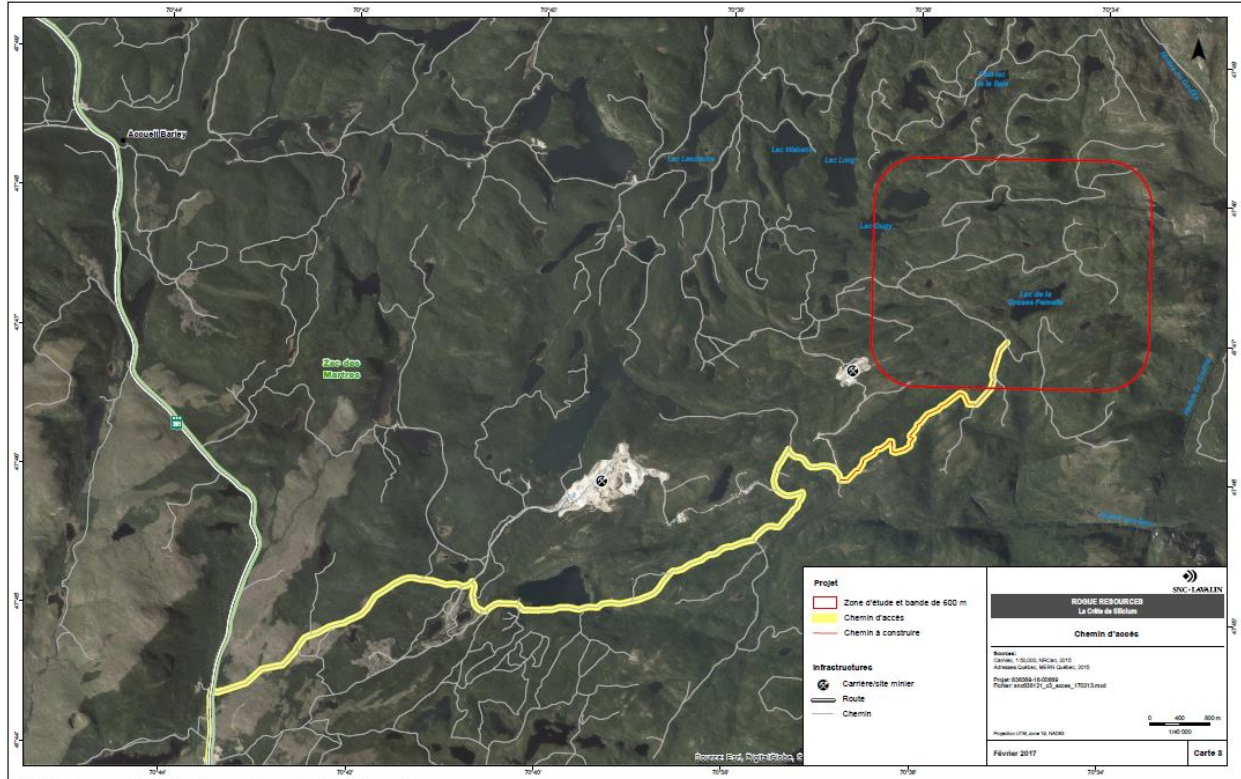
The Property is comprised of eight (8) contiguous map-designated mineral claims (“CDC” claims) that form a rectangular block covering a total area of 462.6 ha, is situated on public land and located within the “ZEC des Martres”. All the claims are currently active and Rogue Resources Inc. is the 100% recorded owner. All the claims are affected by a restriction related to a Wildlife Habitat protection (Figure 2).

Figure 2: Wildlife Habitat Area with Silicon Ridge Project Location



Main access to the Silicon Ridge property is from the paved all-weather Highway 381 from Baie-Saint-Paul, Quèbec (Figure 3). The main-haul gravel logging road is reachable from the main access to the Sitec quartzite property. Silicon Ridge is located approximately 14 km from Highway 381. The plan is to upgrade part of the existing gravel access road and the last part of the road that reaches the site along an existing access route.

Figure 3: Proposed South Access Road Location for Silicon Ridge Project



Project Description

The project footprint includes an operating area (South West Quarry), an operating area, a low-grade ore storage area, an overburden storage area, a As well as a sedimentation basin. These elements are shown on Map 2 of Appendix B and Figure 1 and their respective areas are shown in Table 1.

Table 1: Area (ha) of the surface impacts

Élément	Superficie (ha)
Area of Exploitation (South West Quarry)	8,59
Operating Area	1,04
Low Grade Ore Storage Area	6,10
Overburden Stockpile	3,15
Waste Rock Stockpile	6,61
Sedimentation Basin	0,03
Total	25,52

The construction period, which runs from 21 July to the end of September 2017, consists of three main activities: deforestation, overburden management and the development and construction of the various areas and buildings. The operating period, which is planned for a minimum of 10 years, includes the drilling, blasting, loading, transport, crushing and screening activities and then transporting the latter to the users. Table 2 presents these activities, the sector concerned and the periods concerned. There will probably be 30 people on the site during peak summer operations (for mining) and up to five people in the winter. As new customers are identified, additional staff will be hired to meet delivery requirements while respecting the annual extraction limit.

Table 2: Schedule of Project Activities for Silicon Ridge

Activity	Target Sector	Period
Period of Construction		
Deforestation of the pit area and treatment area	On the site	July 21 to September 30
Removal and storage of overburden from operating areas	On the site	July 21 to September 30
Construction of deposition area, crushing and screening area, fueling area and office trailers	On the site	July 21 to September 30
Period of Exploitation (2017 to 2037)		
Drilling of blast holes in planned benches	On the site	May 1 to October 31
Blasting of designated materials (once or twice per week)	On the site	May 1 to October 31
Loading haul trucks with blasted material	On the site	May 1 to October 31
Transportation of quarry materials to the crushing and screening site	On the site	May 1 to October 31
Crushing of material to a size of less than 120 mm	On the site	May 1 to October 31
Screening of material at specific sizes	On the site	May 1 to October 31
Manual or visual classification to determine product quality and particle size	On the site	May 1 to October 31
Storage of high and low quality silica products	On the site	May 1 to October 31
Packaging silica products to buyer specifications	On the site	May 1 to October 31
Transportation of materials to end users	Off of site	May 1 to November 30

Annual Production and Quarrying Method

The estimated annual production of the quarry is approximately 180,000 tonnes per year. A detailed plan will be prepared to allow continuous and progressive restoration throughout the life of the quarry.

The method of exploitation used for the project is of conventional type either by drilling and blasting. Loading will be by mechanical shovels and trucking, using covered trucks. The vegetation, topsoil and

overburden will be excavated and stacked on site to restore the site. Mineralized materials and waste rock will be operated with 5 m high benches.

Description of the other uses of the territory near the project site

As reported by the MRC Charlevoix in 2012, in their Development Plan, the area is characterized by a low population density, yet it attracts a number of tourists and outdoors enthusiasts on a yearly basis, including for fishing and hunting and for several other types of recreational activities. Indeed, this area is home to ecological reserves, outfitting zones, and Provincial parks, and the project site itself is located within the *Zone d'Exploitation Contrôlée (ZEC) des Martres*. The *ZEC des Martres* is part of Québec's hunting zone #27 and fishing zone #27. In addition, several campgrounds are located more than 1 kilometre outside the project site, along the ZEC's main access road.

The Property is surrounded by claims on all sides and the claims having a common side with the Property are registered under the names of:

- 9019-5504 Québec Inc., (Holdings company incorporated in 1995) on the east;
- Société d'exploration Minière Vior Inc. on the south;
- Sitec Quartz Inc. on the south and the west;
- 888295 Canada Inc. on the north (incorporated in the Province of Ontario in 2014).

The information provided in this Section is publicly disclosed, derived from an Internet search and is mostly drawn from the Registry of Ministère des Ressources Naturelles (GESTIM) and various published maps and reports.

Active quarrying and processing is ongoing at the La Mine Sitec located to the west of the project area (see figure 2). Sitec operates two quarries and processes the silica at its facility located at the main pit approximately 4 kilometres from the Company's proposed project. The main silica quarry has been in operation for over 50 years. The smaller satellite quarry is located approximately 1.5 kilometres to the east of the proposed project.

Benefits and Disadvantages for the Silicon Ridge Project

As reported by the MRC Charlevoix in 2012, in their Development Plan, the exploitation of natural resources, including forestry and agriculture, account for 7.7%ⁱ of the economic activity at the local level.

The Company estimates that the initial operations will require approximately 5 staff and hourly employees to run the Company's activities on site. Employment opportunities are anticipated to increase up to 16 staff and hourly positions as additional product uses are identified.

Additional jobs will be generated as a result of related activities performed by the quarrying contractor, the transportation company as well as supplies and services industries in the area. It is believed that personnel for a mining operation can be found in nearby towns (Saint-Urbain, Baie-Saint-Paul, Clermont,

La Malbaie, Saint-Hilarion) and among Nation Huronne-Wendat , but part of the hired labour will likely be sourced from other cities in Quebec due to requirement for skilled professionals.

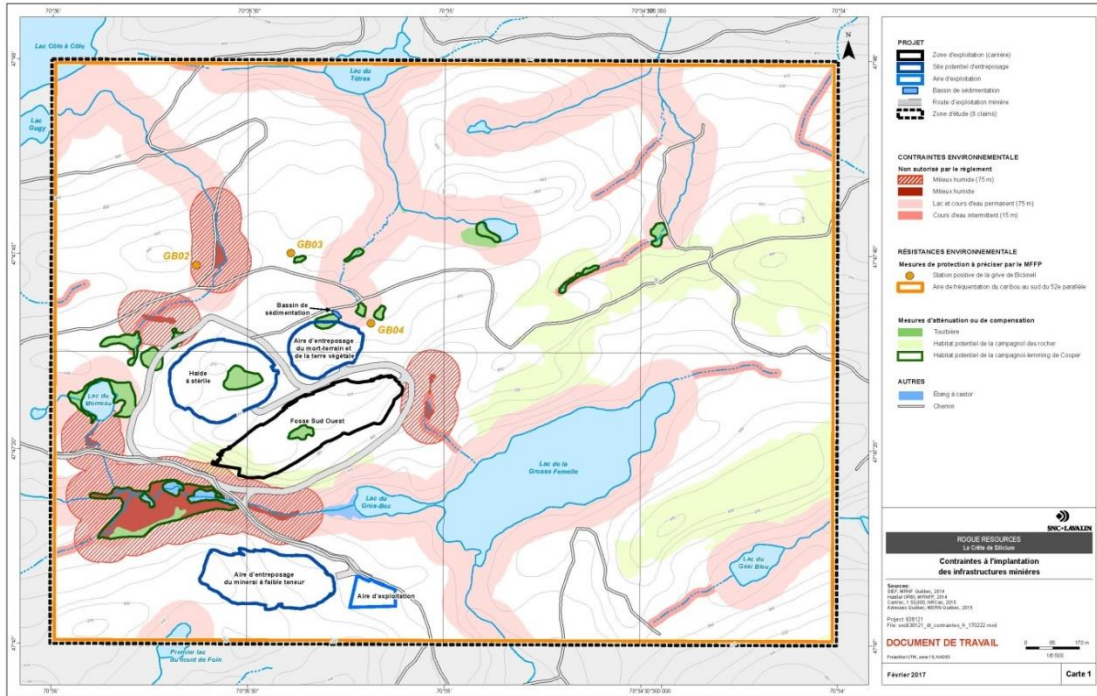
Already, throughout the exploration program local employment in the region was created as well as hiring local contractors for line cutting, outcrop stripping, cutting timber on drill pads, drill pad site preparation with an excavator, and restoration of drill sites. Purchasing locally in Saint-Urbain and Baie-Saint-Paul was highly encouraged and accommodations in the region were used during an eight month period in 2015.

Proposed mitigation measures

Since the beginning of the project, Rogue Resources Inc. has interacted with the various local stakeholders including: the Municipalities of Saint-Urbain, of Baie-Saint-Paul, and of Les Éboulements; the MRC of Charlevoix; the ZEC des Martres and the Nation Huronne-Wendat. Stakeholders were kept informed on the project and work development. In particular, the ZEC des Martres was kept informed of all exploration activities and the Company took the necessary measures to ensure the ZEC des Martres access roads were kept in a reasonable condition, providing grading of the roads when required. The Company plans to continue to provide update to the local stakeholders throughout the permitting, development and quarrying periods.

According to Article 14 of the *Regulation respecting pits and quarries*, the operating site of any new quarry must be located at a minimum horizontal distance of 75 m from any permanent stream, lake or swamp. Furthermore, a 15 m strip must be maintained for intermittent streams, as provided for in the Protection Policy for *Lakeshores, Riverbanks, Littoral Zones and Floodplains*. The Mine Site as Layout has been designed to respect these distances see Figure 4).

Figure 4: Mine Site Layout and Constraints Map



The project is located within a habitat that is conferred legal status by the Regulation respecting *Wildlife Habitats*. To this end, Rogue Resources must file a request for authorization to implement its project in this legally protected habitat, as provided for in Article 128.7 of the *Act respecting the conservation and development of wildlife*. The cumulative effects of other anthropogenic disturbances taking place in the project area will also be taken into account by the competent authorities when approving or rejecting activities in the legal caribou habitat. In June 2016 Rogue Resources took steps towards securing the required authorizations which, if granted, will require certain mitigation measures being implemented. These mitigation measures include restriction periods for certain activities. Rogue Resources is working proactively with the relevant authorities to determine and implement the required mitigation measures.

Rogue Resources Inc. has completed a number of field and habitat surveys in the project area including for bat species, the potential habitats of special status voles, wetlands, vegetation, avifauna, and ichthyofauna. Results of the studies and surveys have been submitted to the *Ministère des forêts, de la faune et des parcs* (MFFP) et au *Ministère du Développement durable, de l'Environnement et de la Lutte contre les changements climatiques* (MDDELCC) for analysis and any specific requirements for all of these species will be provided. Rogue Resources inc. will put these measures in place as required. Two main alternatives are under consideration for the access road to the project site (see figure above). The Company prefers the southern alternative because it avoids the main road of ZEC des Martres and would have the least amount of impact on the road maintenance. The north road will be utilized to truck in the equipment to complete the construction process and the company will ensure the road is graded and maintained to minimize any impacts to the enjoyment of the area by hunters, fishers and other stakeholders. Further assessment for this access road will be carried out after completion surveys for this project area and the results of the public consultation.

Provisions will be made for closure and rehabilitation of the project upon completion. For rehabilitation of the waste rock and overburden stockpiles, as well as the crushing and screening area, quantities were derived from the layouts and estimation will be based on unit rates from recent similar projects. A more detailed mine restoration plan will be developed in subsequent phases of the project to assess continuous rehabilitation throughout the quarry's life in order to anticipate more detailed yearly disbursement.
